

# Optimizing the Aluminum Recycling Upgrade Process Using Multi-Sigma®

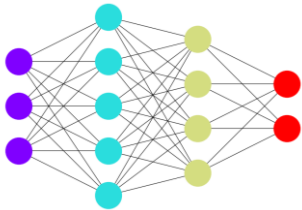
This case study showcases how Multi-Sigma’s AI-driven analysis platform optimizes the aluminum recycling upgrade process by enhancing mechanical properties while minimizing greenhouse gas (GHG) emissions and costs. This project was conducted as a part of a NEDO-funded project, this study leverages AI to drive significant advancements in sustainability and performance.

## 1. AI analysis

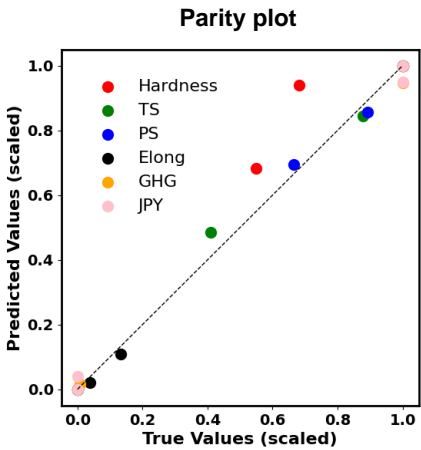
A dataset containing 18 process samples was analyzed. The AI model was trained using key input parameters from the aluminum recycling process, including impurity concentration, solution treatment duration, high-pressure sliding process, and aging treatment conditions. The output parameters included the mechanical properties of the recycled aluminum, as well as associated GHG emissions and cost estimates.

Process stage	Process input parameter
Impurity concentration	Si
	Fe
	Mg
Solution treatment	Temperature
	Time
Pressure slide process	Pressure
	Length
Aging treatment	Temperature
	Time

Multi-Sigma  
Neural network analysis



Process output
Hardness
Tensile strength (TS)
0.2% Proof stress (PS)
Elongation (Elong.)
GHG emission
Cost (JPY)



## 2. Factor Analysis

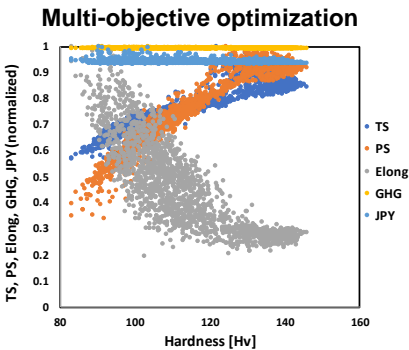
The factor analysis identified the most influential parameters affecting the aluminum recycling process:

- 1. Length of the high-pressure sliding process (~ 41% influence).
- 2. impurity concentration (~ 19% influence).
- 3. solution treatment time (~ 12% influence).

## 3. Multi-objective Optimization of the Recycle Process

Multi-Sigma’s optimization module was utilized to determine the ideal recycling process parameters. The objective was to maximize key mechanical properties—such as tensile strength, 0.2% proof stress, and elongation—while minimizing GHG emissions and cost.

Ts,MPa	PS, MPa	Elong.	GHG, kg-CO <sub>2</sub> eq	JPY
461	393	0.67	0.66	180



Source: [aizoth.com/research-project/nedo/](https://aizoth.com/research-project/nedo/)

AIZOTH inc. provides a range of AI services, including Multi-Sigma®, AI consulting, experimental condition optimization support, and contract research and development. Multi-Sigma® is a cloud-based AI software designed for research and development, significantly reducing experimental workload and enabling researchers to discover innovative solutions to real-world challenges with minimal experimental datasets.

<https://aizoth.com/en/service/multi-sigma/>  
[info@aizoth.com](mailto:info@aizoth.com)

